

WOMENS BASKETBALL UNIFORM

Cuts Offered

Standard V-Neck *w/option to have reversible*

Racerback V-Neck *w/option to have reversible*

Sizes Available: WS- W3XL

Product Fit: Athletic Fit

(Runs true to size/slightly small. If concerned go up a size)

Standard Basketball Short: 9" Inseam

*w/option to have reversible**product has drawstring*

Number Sizing

Front Number: 5" *standard front center*

Front Number: 2.5" *standard right or left chest*

Back Number: 7"

Shorts Number: 2.5"

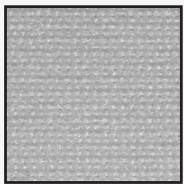
Text Guide

Front Team Name: 2.25" Tall

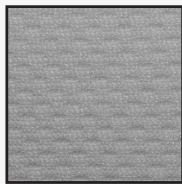
(Longer names will fall closer to 2" tall so they don't go over 11.5" wide)

Back Player or Team Name: 1.75" Tall

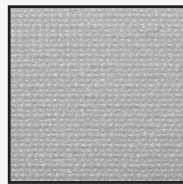
Fabrics Offered



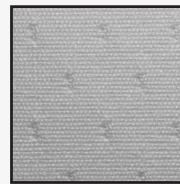
709 Fabric
Point Performance



716 Fabric
Core Wick



775 Fabric
Dry Excel



607 Fabric
Battle Mesh

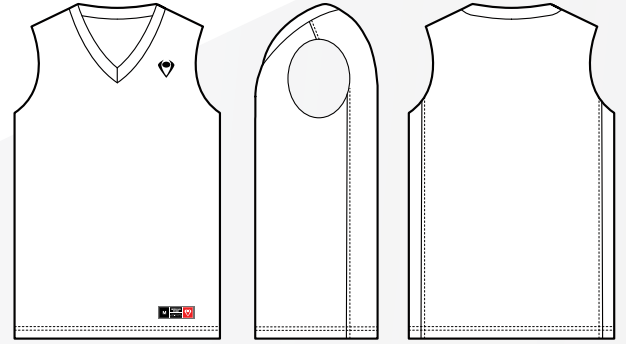
Special Notes:

All given number/design sizing is based on Imperial Point standards, due to certain longer/shorter team names, these may be edited to better fit the design/style of the jersey. All specs will be called out on final sublimation art approvals.

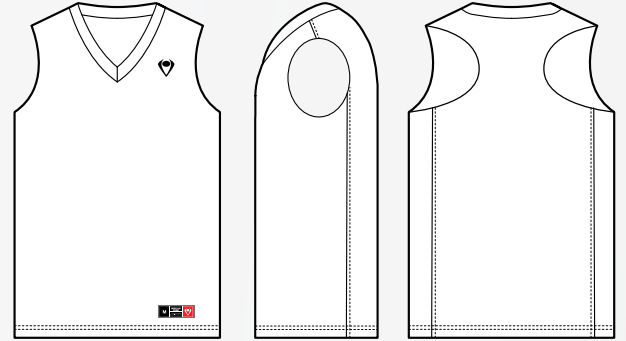
Locker tags are included on the bottom of all Imperial Point jerseys which include Imperial Point branding and the garment size.

Reversible uniforms are a double ply fabric. Sizing is found on the locker tag and not on the neck. Confirm which side of the jersey wants which collar color at final submission.

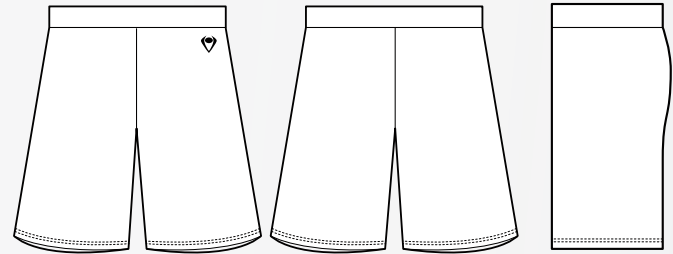
Player names on racerback jerseys go under the number on the back of the jersey. Racerback not offered in youth sizes but there is a WXS size that will fit any YM/YL players.



WOMEN'S STANDARD V-NECK



WOMEN'S RACERBACK V-NECK



WOMENS 7" BASKETBALL SHORTS

WOMENS BASKETBALL UNIFORMS



SIZE	WS	WM	WL	WXL	W2XL	W3XL
HEIGHT	27"	28"	29.25"	30.25"	31.5"	32.5"
WIDTH	34"	38"	42"	46"	48"	50"
WAIST	26-28"	28-30"	30-32"	34-36"	36-38"	38-40"

HEIGHT: TOTAL LENGTH OF THE BODY OF THE GARMENT

WIDTH/CHEST MEASUREMENT: MEASURING THE WIDTH OF THE JERSEY FROM ARMPIT TO ARMPIT AND THEN DOUBLING THE MEASUREMENT GIVES YOU THE GARMENTS CHEST MEASUREMENT

WAIST: THE PLAYERS WAIST MEASUREMENT FACTORING THE STRETCH OF THE SHORTS AND FINISHED WIDTH

