

GIRLS BASKETBALL UNIFORM

Cuts Offered

Youth Boys V-Neck Jersey *w/option to have reversible*

Sizes Available: YS-YXL

Product Fit: Youth Fit

(Runs slightly large)

Youth Basketball Short : 7" Inseam

*w/option to have reversible**Product has drawstring*

Boys Reversible Short: 9" Inseam

Product has drawstring

Number Sizing

Front Number: 5" *standard front center*

Back Number: 7"

Shorts Number: 2.5" Tall

Text Guide

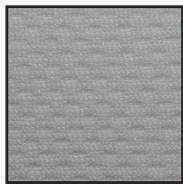
Jersey Front Team Name: 2.25" Tall
(11.5" Wide is usually widest recommend text)

Jersey Back Player or Team Name: 1.75" Tall

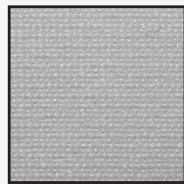
Fabrics Offered



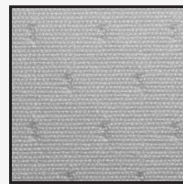
709 Fabric
Point Performance



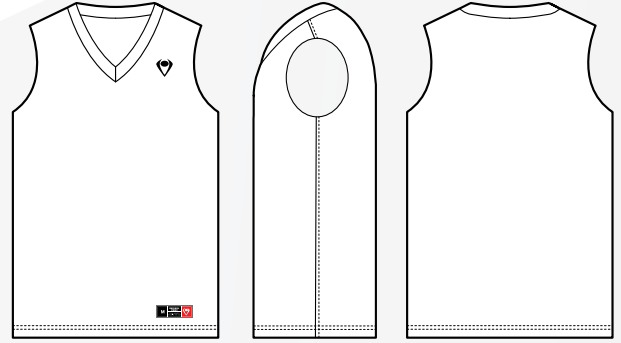
716 Fabric
Core Wick



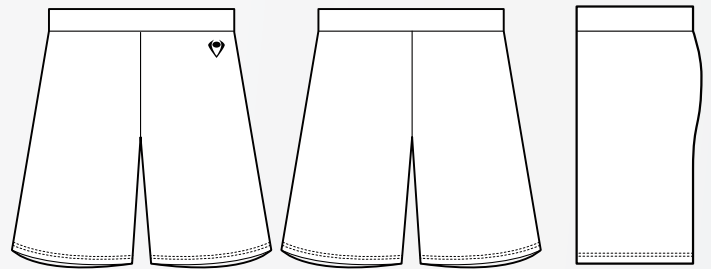
775 Fabric
Dry Excel



607 Fabric
Battle Mesh



GIRLS V-NECK



GIRLS 7" BASKETBALL SHORTS

Special Notes:

All given number/design sizing is based on Imperial Point standards, due to certain longer/shorter team names, these may be edited to better fit the design/style of the jersey. All specs will be called out on final sublimation art approvals.

Locker tags are included on the bottom of all Imperial Point jerseys which include Imperial Point branding and the garment size.

Reversible uniforms are a double ply fabric. Sizing is found on the locker tag and not on the neck. Confirm which side of the jersey wants which collar color at final submission.

GIRLS BASKETBALL UNIFORM



SIZE	GS	GM	GL
HEIGHT	21.75"	23.5"	25.25"
WIDTH	27.5"	30"	32"
WAIST	22-24"	24-26"	26-28"

HEIGHT: TOTAL LENGTH OF THE BODY OF THE GARMENT

WIDTH/CHEST MEASUREMENT: MEASURING THE WIDTH OF THE JERSEY FROM ARMPIT TO ARMPIT AND THEN DOUBLING THE MEASUREMENT GIVES YOU THE GARMENTS CHEST MEASUREMENT

WAIST: THE PLAYERS WAIST MEASUREMENT FACTORING THE STRETCH OF THE SHORTS AND FINISHED WIDTH

