

# BOYS BASKETBALL UNIFORM

## Cuts Offered

**Youth Boys V-Neck Jersey** \*w/option to have reversible\*

**Sizes Available:** YS-YXL

**Product Fit:** Youth Fit

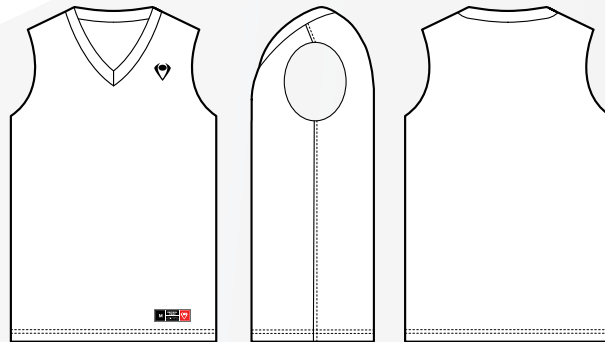
(Runs slightly large)

**Youth Basketball Short :** 7" Inseam

\*w/option to have reversible\*\*Product has drawstring\*

**Boys Reversible Short:** 9" Inseam

\*Product has drawstring\*



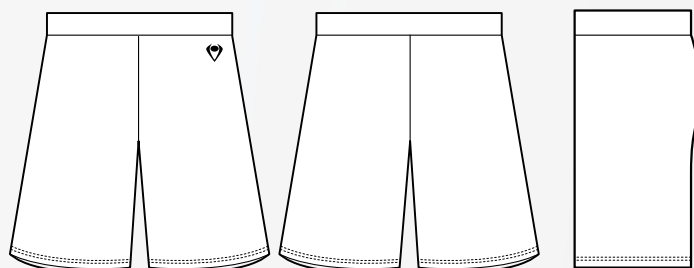
BOYS V-NECK

## Number Sizing

**Front Number:** 5" \*standard front center\*

**Back Number:** 7"

**Shorts Number:** 2.5" Tall



BOYS 7" BASKETBALL SHORTS

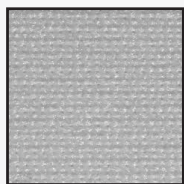
## Text Guide

**Jersey Front Team Name:** 2.25" Tall

(11.5" Wide is usually widest recommend text)

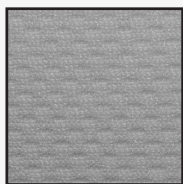
**Jersey Back Player or Team Name:** 1.75" Tall

## Fabrics Offered



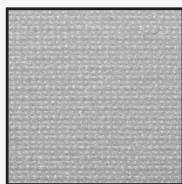
709 Fabric

Point Performance



716 Fabric

Core Wick



775 Fabric

Dry Excel



607 Fabric

Battle Mesh

## Special Notes:

All given number/design sizing is based on Imperial Point standards, due to certain longer/shorter team names, these may be edited to better fit the design/style of the jersey. All specs will be called out on final sublimation art approvals.

Locker tags are included on the bottom of all Imperial Point jerseys which include Imperial Point branding and the garment size.

Reversible uniforms are a double ply fabric. Sizing is found on the locker tag and not on the neck. Confirm which side of the jersey wants which collar color at final submission.

# BOYS BASKETBALL UNIFORM



SIZE	YS	YM	YL	YXL
HEIGHT	25.25"	26"	26.75"	27.25"
WIDTH	31"	35"	39"	43"
WAIST	22-24"	24-26"	26-28"	28-30"

**HEIGHT:** TOTAL LENGTH OF THE BODY OF THE GARMENT

**WIDTH/CHEST MEASUREMENT:** MEASURING THE WIDTH OF THE JERSEY FROM ARMPIT TO ARMPIT AND THEN DOUBLING THE MEASUREMENT GIVES YOU THE GARMENTS CHEST MEASUREMENT

**WAIST:** THE PLAYERS WAIST MEASUREMENT FACTORING THE STRETCH OF THE SHORTS AND FINISHED WIDTH

